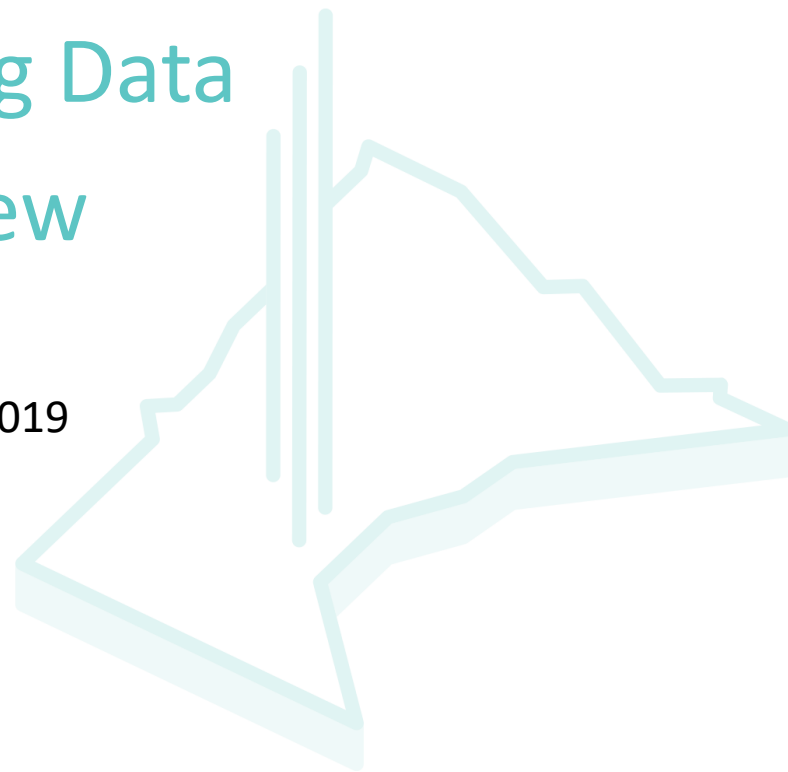




2019 Rating Data Overview

January 15, 2019



Proven & Promising Defined

Proven Over 40% FRL High Performing**	Promising			
	Over 40% FRL & High Potential**	On the Right Track	New	Transformation & Restarts
<ul style="list-style-type: none"> Outperform state average on MCA proficiency 2 of 3 years <p>OR</p> <ul style="list-style-type: none"> Was in the top 25% of Minneapolis schools on MCA growth 2 out of 3 years* 	<ul style="list-style-type: none"> Outperform district average on MCA proficiency 2 of 3 years <p>OR</p> <ul style="list-style-type: none"> On average, students grew at least one academic year of MCA growth 2 out of 3 years** <p>OR</p> <ul style="list-style-type: none"> Outperform district average on MCA progress 2 of 3 years 	<ul style="list-style-type: none"> Schools demonstrate their progress through a portfolio of their design <p>OR</p> <ul style="list-style-type: none"> Independent schools identified by partners based on available data 	<p><i>Vetted by GMS and approved by GMS board for funding</i></p> <ul style="list-style-type: none"> Pre-launch funding in place Promising school model & foundation for success <p>OR</p> <ul style="list-style-type: none"> New schools associated with an existing high performing / high potential CMO 	<ul style="list-style-type: none"> New school model and team Proven school leader and school model Board and community support Vetted by GMS and approved by GMS board for funding

Note:

*Growth is 2 separate measures, z-score and progress. See slide 4 for more information.

**Independent schools where MCA data is not available, independently provide NWEA/MAP data to be eligible for a high potential or high performing rating. See slide 4 for more detail.

Proven & Promising – How schools get added/removed

Proven High Performing	Promising			
	High Potential	On the Right Track	New	Transformation & Restarts
<ul style="list-style-type: none"> MCA Results ACT Results College Persistence Data NWEA/MAP data (ind. schools only) Yearly 	<ul style="list-style-type: none"> Schools vetted by GMS and approved by GMS board for funding Quarterly 			
	<ul style="list-style-type: none"> Schools that provide a portfolio to demonstrate progress Continuous Schools without data associated with a green or blue school Yearly 	<ul style="list-style-type: none"> New schools associated with a green or blue school Yearly 		

Ratings Definitions – Elementary and Middle School

	HIGH PERFORMING	HIGH POTENTIAL	MID PERFORMING	LOW PERFORMING	PERSISTENTLY LOW PERFORMING
Overall	2 of 3 years of High Performing in Proficiency OR Growth	2 of 3 years of High Potential (or better) in Proficiency OR Growth	2 of 3 years of Mid Performing (or better) in Proficiency AND Growth	2 of 3 years of Low Performing in Proficiency OR Growth	2 of 3 years of Low Performing in Proficiency AND Growth

	HIGH PERFORMING	HIGH POTENTIAL	MID PERFORMING	LOW PERFORMING
MCA Proficiency	Outperform state average on MCA proficiency 2 of 3 years	Outperform district average on MCA proficiency 2 of 3 years		~ Bottom 25% of Minneapolis schools on proficiency
MCA Growth	Out perform the state on MCA growth (progress or z-score)	Out perform the district on MCA growth (progress or z-score)		~ Bottom 25% of Minneapolis schools on growth
NWEA MAP Proficiency* (Independent Schools only)	More than 60% of students are at grade level on the NWEA MAP test.	More than 50% of students are at grade level on the NWEA MAP test.		Less than 40% of students are performing at grade level on the NWEA MAP.
NWEA MAP Growth (Independent Schools only)	More than 60% of students are meeting their growth target on the NWEA MAP test.	More than 50% of students are meeting their growth target on the NWEA MAP test.		Less than 40% of students are meeting their growth target on the NWEA MAP test.



*Defined as the percent of students at or above the 51st percentile.

Ratings Definitions – High School

	HIGH PERFORMING	HIGH POTENTIAL	MID PERFORMING	LOW PERFORMING	PERSISTENTLY LOW PERFORMING
Overall	2 of 3 years of High Performing in ACT or College Persistence	2 of 3 years of High Potential in ACT or College Persistence	2 of 3 years of Mid Performing (or better) in ACT or College Persistence	Mid Performing in one category and Low performing in the other category (ACT/college persistence)	2 of 3 years of Low Performing in ACT and college persistence

	HIGH PERFORMING	HIGH POTENTIAL	MID PERFORMING	LOW PERFORMING
ACT	2 of 3 years Average ACT score above 21	2 of 3 years Average ACT score between 18 and 21	2 of 3 years Average ACT score between 15 and 18	2 of 3 years Average ACT score below 15
College Persistence	% of seniors graduating, attending college and persisting into or graduating by their 2nd year is beating the state average 2 of 3 years	% of seniors graduating, attending college and persisting into or graduating by their 2nd year is beating the MPS average 2 of 3 years		% of seniors graduating, attending college and persisting into or graduating by their 2 nd year is in the bottom 25% of high schools 2 of 3 years

Changing the Odds Definition

For Changing the Odds, we only look at how the low income students (measured by Free and Reduced Lunch eligibility) in a school are performing. If the low income students are performing above the high potential benchmark, then the school is considered changing the odds.



A school is changing the odds if their low-income students are on average falling into the high potential or high performing bucket 2 of 3 years.

Support Slides

Notes to Ratings

- Z-score 2016
 - In 2018 we moved to z-score for the growth rating. This changed the 2016 growth rating of the schools marked with an asterisks.
- Progress
 - In 2018 we added the new MDE Progress metric to the Growth measure.
- College Persistence
 - In 2018 we added college persistence, as is measured by the MDE - SLEDs database, to the high school rating due to high levels of MCA opt-out.

Rating Calculations – Performance Bands

HIGH PERFORMING

HIGH POTENTIAL

MID PERFORMING

LOW PERFORMING

Growth

Z-score Performance Bands

High Range	N/A	0.074	0.039	(0.349)
Low Range	0.075	0.040	(0.350)	TBD

ACT

Performance Bands

High Range	N/A	21	18	15
Low Range	21	18	15	0